



Weekly Bulletin 6th June 2025

SEN News



As we approach another busy term, I am delighted to reflect on the fantastic progress and dedication by our SEN students at The Rural Enterprise Academy. One of my proudest moments has been seeing our Year 11 SEN students prepare for their exams. Their determination has been so impressive, and we are proud of the mature approach they have taken towards this crucial step in their education.

Careers and transition support for our Year 11 SEN pupils continues as we prepare them for their next exciting steps. We're incredibly proud of each learner and the progress they've made. Every pupil has received tailored support through EHCP reviews, careers guidance, college visits, and transition planning.

We wish them every success in their next chapter and hope they achieve the grades they've worked so hard for.

Here's a snapshot of where they're heading next:

Rodbaston College – Mechanics, Animal Care

Stafford College – Criminology & Law A-Level, Travel & Tourism, Carpentry, Bricklaying, Esports (Gaming & Streaming),

Psychology A-level, Geography A-level, Photography A-level, English A-Level, Biology A-level

Cannock College – Early Years,

Wolverhampton College – Drama

RAF Cosford – Aspiring Engineer

Apprenticeship Pathway: Electrician

As we move into the final term of the year, I look forward to continuing our shared work to support the progress, well-being, and independence of every student with SEND. Together, we can make sure each young person feels understood, supported, and ready for their next steps.

Thank you for your continued support.

Mrs Fiddler

SENCO – The Rural Enterprise Academy



1 - Interventions

Reading

Lexonik is a structured literacy intervention programme designed to rapidly boost reading accuracy, vocabulary, and comprehension. It supports students who need extra help with decoding and processing written language — and builds confidence at the same time.

This term, we're delivering Lexonik with groups in Years 7, 9, and 10. Early results have been incredibly promising.

Here's what Mrs Cooper (Assistant SENCO) had to say:

“A few students were unsure at first, but after the first session they were asking when the next one was! The results were amazing, and we couldn't be prouder. Most students improved their reading noticeably — we can't wait to see the full impact this summer.”

We're excited to see how this programme continues to support our learners as they grow into confident, independent readers.



2 - Supporting Handwriting

In a digital age, handwriting can sometimes be overlooked — but it still plays a vital role in how students learn, process, and remember information. Research shows that handwriting helps with:

Memory and brain development

Problem-solving and creativity

Focus and retention in lessons

Sessions focus on:

Letter formation and spacing

Building confidence and stamina in writing

These skills will also be reinforced during English lessons and across the curriculum.

If you want to read about how you can provide help and support at home

click [Handwriting](#) A big thank you to Mrs Smallwood for leading these sessions with care and consistency.



3 - Touch Typing

For pupils who use or may need a laptop to support their learning, we've introduced a weekly touch-typing intervention. This is helping students to:

Improve their typing speed and accuracy

Build confidence when working on computers

Prepare for future assessments and exams

Regular practice is already showing great progress — and pupils are enjoying the challenge!

This support ensures that students who need access arrangements or alternative methods of recording their work are ready, equipped, and confident. A big thank you to Mrs Clegg and Mr Clarke for leading these sessions with such enthusiasm and care.



4 - This Girl Can and Now This Boy Can....

Our This Girl Can intervention, led by Mrs McVicar (Mental Health and Wellbeing Lead), has been a huge success — boosting confidence, resilience, and wellbeing through positive group sessions and accessible physical activity.

Following the positive impact on our girls including SEND, we are now excited to launch a new strand of the programme:

This Boy Can

This new intervention will offer boys the same supportive space to:

Build confidence and self-belief

Develop tools for emotional regulation and resilience

Take part in non-competitive physical activities

Explore themes of identity, positive masculinity, and wellbeing

Both interventions aim to break down barriers and support young people to feel empowered, accepted, and proud of who they are.

We look forward to seeing This Boy Can make just as much of an impact as its sister programme!

Dates for your diary



Parental meetings for APDR Cycle 3 will take place this term. This is a valuable opportunity to review your child's SEN support plan, discuss progress, and agree next steps together

Date: Wednesday 25th June

Time: 13:30 – 15:30

Where: In School

Booking: Online via SchoolCloud

You will receive a SchoolCloud invite shortly to book your appointment

We look forward to meeting with you and continuing our work together to support your child's progress.

The Local Offer



Links to local offer providers.

Staffordshire:

<https://www.staffordshireconnects.info/kb5/staffordshire/directory/localoffer.page?localofferchannel=0>

Wolverhampton:

<https://win.wolverhampton.gov.uk/kb5/wolverhampton/directory/localoffer.page?localofferchannel=0>

Walsall:

<https://send.walsall.gov.uk/>

Shropshire:

<https://next.shropshire.gov.uk/the-send-local-offer/>

Telford and Wrekin:

<https://www.telfordsend.org.uk/site/index.php>

[Mental Health Support](#) : These free apps can help you look after your mental health with simple tools to manage stress, handle your emotions, and learn more about mental health.

The Sandbox is an 'online hub' for children and young people in South Staffordshire where they can safely seek help and advice about their mental health [Sandbox](#)

GRACE 2 GRACE SUPPORT FOR WOMEN



GRACE 2 GRACE

The B.K Project Womens Support Group

Empowering Women

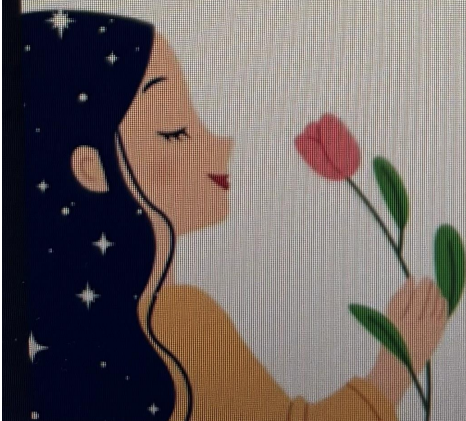
We Offer Wellbeing Workshops In a Safe Space

To Combat -

- Anxiety/Depression
- Addiction
- Loneliness
- Unhealthy Relationships

We Offer -

- Coping Strategies
- Build Self Esteem
- Make New Friends
- HOPE



Join us
Every Saturday 2-4pm
@The Community Room, Bilbrook Fire
Station, 48 Duck Lane, Codsall WV8 1HZ
grace2graceuk@gmail.com

The B.K. women's project is a safe space in Codsall to support Women. This is a women's support group/wellbeing workshops which is available every Saturday afternoon (2 – 4pm) in the Community Room at Bilbrook and Codsall Community Fire Station.

For any additional information, please contact Aneeta and Anita at Grace2Grace Counselling and Wellbeing Services on grace2graceuk@gmail.com